



Our ENERGIN® GEN sets are highly efficient power generators that can operate both in island and mains parallel operation mode. The innovative design allows an easy and space-saving installation. All major components like gas engine generator unit, circulation pumps and control cabinet are factory mounted on a common frame.

The gas engines of the in-house M-series are the core of our units in the electrical power range of 130 - 500 kW. The engines are specially developed and manufactured by us for the use with different gases. In addition to natural gas and biogas, the engines can also run with LPG, wood gas and other special gases. For the latest engine generation, we rely on the modern 4-valve technology to provide even higher efficiency.

With an optional sound attenuating enclosure, that is mounted on the base frame, the sound pressure level can be reduced to less than 70 dB(A) in 1 m distance.

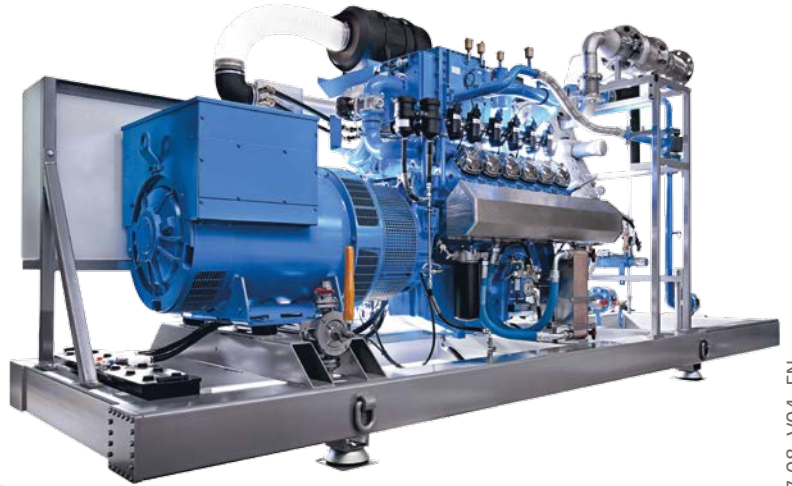
For customers with heat demand we recommend our ENERGIN® CHP or ENERGIN® GEN+ units.

	ENERGIN® type	Engine type	Electrical power	Electrical efficiency	Engine specification			
natural gas	GEN G150/60 Hz	M06-GT0D41	150 kW	37,0 %	Bore	[mm]	130	
	GEN G210/60 Hz	M06-GTID41	210 kW	39,5 %	Stroke	[mm]	142	
	GEN G250/60 Hz	M06-GT2D41	250 kW	40,3 %	Speed	[min ⁻¹]	1.800	
	GEN G280/60 Hz	M08-GTID41	280 kW	39,5 %	Mean piston speed	[m/s]	8,5	
	GEN G333/60 Hz	M08-GT2D41	333 kW	40,4 %	Applicable gas types	G = natural gas B = biogas P = propane and other high calorific gases H = woodgas and other low calorific gases		
	GEN G420/60 Hz	M12-GTID41	420 kW	39,6 %	Aspiration	T = turbocharged		
	GEN G500/60 Hz	M12-GT2D41	500 kW	40,5 %	Mixture cooling	0 = none 1 = internal 2 = double stage internal / external		
biogas	GEN B150/60 Hz	M06-BT0D41	150 kW	37,8 %	Exhaust manifolds	D = dry, insulated		
	GEN B210/60 Hz	M06-BTID41	210 kW	40,2 %	ENERGIN® type	M06	M08	M12
	GEN B250/60 Hz	M06-BT2D41	250 kW	41,1 %	No. of cylinders / configuration	6 in V90°	8 in V90°	12 in V90°
	GEN B280/60 Hz	M08-BTID41	280 kW	40,2 %	Displacement [dm ³]	11,3	15,1	22,6
	GEN B333/60 Hz	M08-BT2D41	333 kW	41,2 %				
	GEN B420/60 Hz	M12-BTID41	420 kW	40,4 %				
	GEN B500/60 Hz	M12-BT2D41	500 kW	41,2 %				
LPG	GEN P130/60 Hz	M06-PT0D41	130 kW	31,0 %				
	GEN P173/60 Hz	M06-PTID41	173 kW	33,5 %				
	GEN P205/60 Hz	M06-PT2D41	205 kW	34,3 %				
	GEN P233/60 Hz	M08-PTID41	233 kW	33,5 %				
	GEN P260/60 Hz	M08-PT2D41	260 kW	34,3 %				
	GEN P350/60 Hz	M12-PTID41	350 kW	33,6 %				
	GEN P450/60 Hz	M12-PT2D41	450 kW	34,5 %				
woodgas	GEN H140/60 Hz	M06-HT2D41	140 kW	33,3 %				
	GEN H180/60 Hz	M08-HT2D41	180 kW	33,4 %				
	GEN H275/60 Hz	M12-HT2D41	275 kW	33,5 %				

GEN Basic scope of supply

4-stroke gas engine coupled with double bearing alternator, mounted on common frame	●
Sound attenuating enclosure with air ventilation, mounted on common frame	○
Remote radiator for jacket water, lube oil and if applicable 1 st and 2 nd stage mixture cooling	○
ENERSCREEN® control system with 12" touch panel for engine, alternator and auxiliaries, set mounted in switchboard, with synchronizing and alternator protection functions	●
Generator circuit breaker, set mounted in switchboard	●
Lube oil system designed for long oil change intervals	●
Electric pre-lubrication pump with changeover valve	●
Exhaust silencer in single or two-stage design, supplied loose	○



● included ○ as an option



optional installation in container



© R Schmitt Enertec GmbH 08/2017

ENERGIN® and  are registered trademarks of and licensed by  GmbH. The use of other brands or trademarks contained in this document by a third party may result in a violation of the rights of the holders of the license plate. Subject to errors and technical modifications excepted.

R Schmitt Enertec GmbH
Siemensstraße 13
56743 Mendig - Germany
Phone: +49 2652 / 93 518 10
Fax: +49 2652 / 93 518 22

R Schmitt Enertec International FZCO
Apricot Tower, Office #804, PO Box 341299
Dubai Silicon Oasis, DSO, UAE
Phone: +971 4 333 57 24
Fax: +971 4 333 91 33

www.rschmitt-enertec.com
info@rschmitt-enertec.com

 **R SCHMITT
ENERTEC**
Committed to Performance